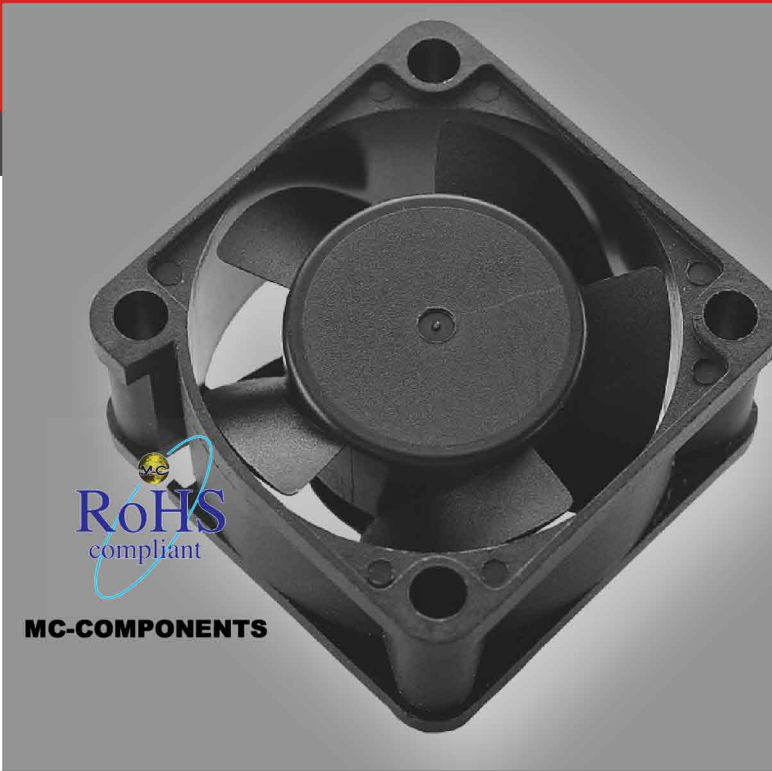


AXIAL DC FAN

FD4020 SERIES



40x40x20mm



MC-COMPONENTS

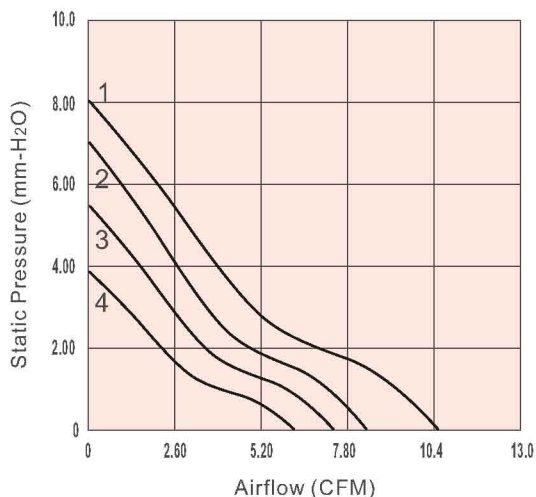
- ◆ Airflow: 5.2~10.7 CFM
- ◆ Static Pressure: 2.7~8.0 mm-H₂O
- ◆ Blade / Housing:
Plastic Material UL 94-0 P.B.T.
- ◆ Lead Wire: UL1007 #26 AWG
- ◆ Weight: 24 g
- ◆ Bearing Type: 2-Ball,
Sleeve
- ◆ Function: N, A, I, F
- ◆ Voltage: 5, 12, 24 VDC

Model No.	Rated Voltage (VDC)	Starting Voltage (VDC)	Operating Voltage Range (VDC)	Speed (RPM)	Max. Airflow (CFM)	Max. Static Pressure (mm-H ₂ O)	Current (mA)	Power Consumption (W)	Life at 40°C (L/10/Hours)	P-Q Curve	Noise Level (dB(A))
FD054020LB (xxx)	5	4	4~5.5	4600	5.2	2.7	110	0.55	80000	4	20.0
FD054020MB (xxx)	5	4	4~5.5	5600	6.3	3.8	140	0.70	80000	3	24.0
FD054020HB (xxx)	5	4	4~5.5	6600	7.5	5.4	180	0.90	75000	2	27.0
FD054020EB (xxx)	5	4	4~5.5	7600	8.5	7	230	1.15	75000	1	31.5
FD124020LB (xxx)	12	7	7~13.2	4600	5.2	2.7	50	0.60	80000	4	20.0
FD124020MB (xxx)	12	7	7~13.2	5600	6.3	3.8	70	0.84	80000	3	24.0
FD124020HB (xxx)	12	7	7~13.2	6600	7.5	5.4	100	1.20	75000	2	27.0
FD124020EB (xxx)	12	7	7~13.2	9000	10.7	8.0	120	1.44	75000	1	35.5
FD124020UB (xxx)	12	7	7~13.2	10800	12.5	12.0	180	2.16	75000		42.0
FD244020MB (xxx)	24	12	12~26.4	5600	6.3	3.8	40	0.96	80000	3	24.0
FD244020HB (xxx)	24	12	12~26.4	6600	7.5	5.4	50	1.20	75000	2	27.0
FD244020EB (xxx)	24	12	12~26.4	7600	8.5	7.0	80	1.92	75000	1	31.5

(xxx): please refer to Model Numbering System for bearing, function and speed level indication.

Specifications are subject to changes without notice. Please refer to the formally issued product specification via contacting Y.S. TECH sales department. Visit Y.S. TECH website at <http://www.ystech.com.tw> for updated information. Customized Specifications are designed accordingly.

PERFORMANCE P-Q CURVE



OUTLINE DIMENSIONS

