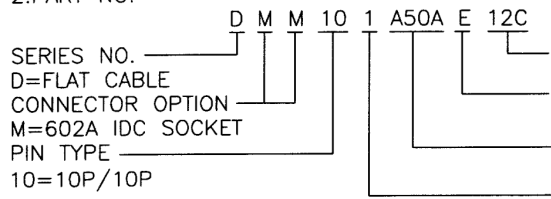


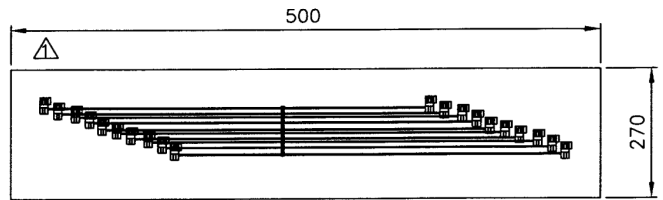
NOTES  
1. PART DESCRIPTION:

ITEM	DESCRIPTION
1	IDC SOCKET 10 PINS W/NOSE W/O S.R. PITCH=2.0mm INSULATOR: BLACK P/N: 602AE10PSAA003
2	FLAT CABLE, CABLING: 10 CONDUCTOR, PITCH=1.00mm COLOR: GRAY, 100% OPEN SHORT TEST

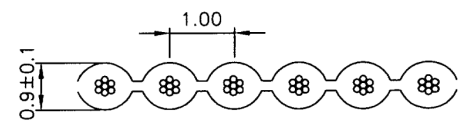
2. PART NO.



LENGTH: 12C=120mm  
ENVIRONMENT PROTECTION MATERIAL: E=RoHS  
SPEC. TYPE. A50A=SAME DIRECTION W/NOSE  
COLOR TYPE. 1=BLACK/BLACK



10 PCS 綁一網, 並裝於一外袋



UNLESS OTHERWISE SPECIFIED TOLERANCE	
0.	±1.0
.0	±0.5
.00	±0.3

SCALE: AS SHOWN UNIT: mm

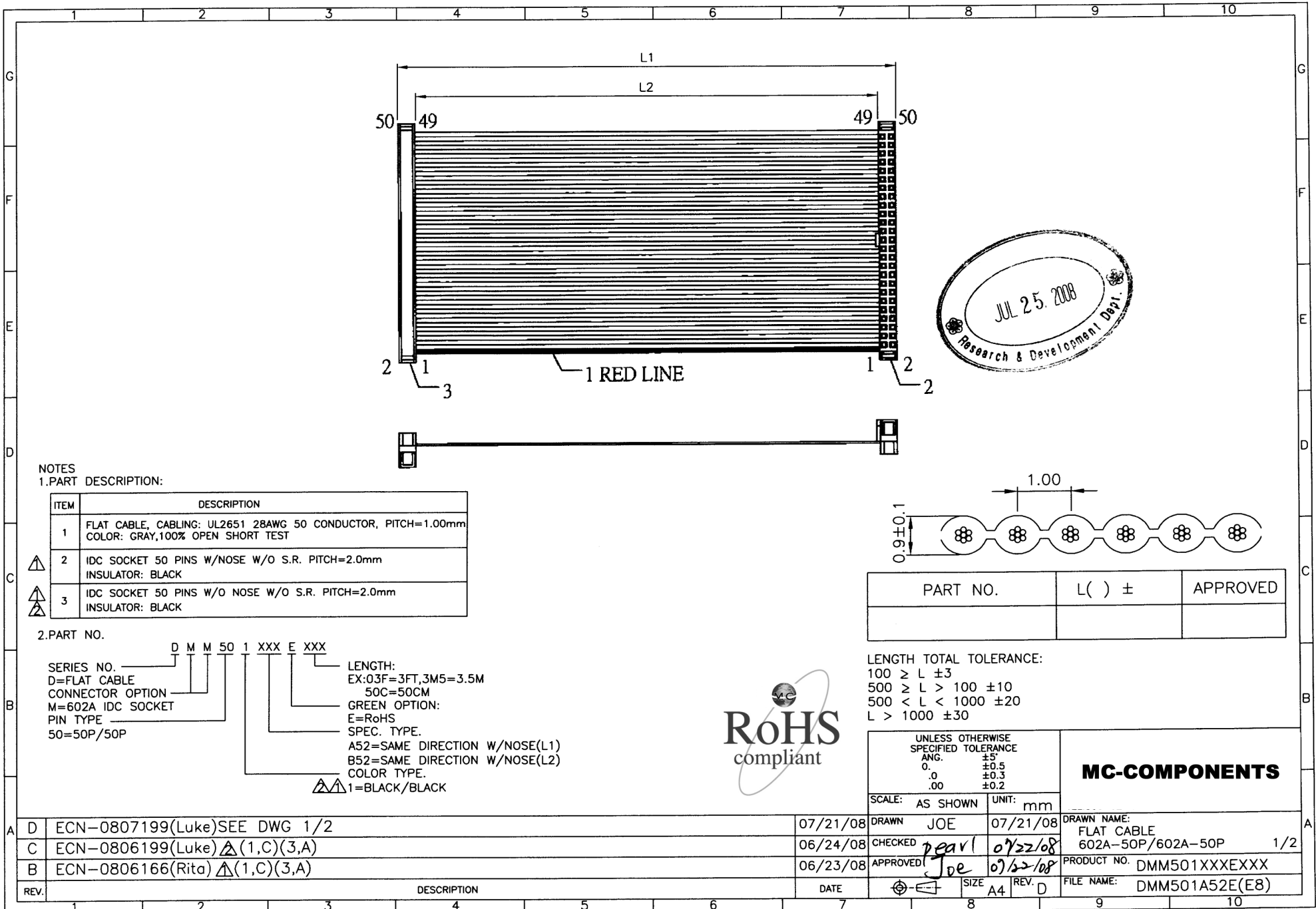
**MC-COMPONENTS**

REV.	DESCRIPTION	DATE	REV.	DESCRIPTION	DATE	SIZE	REV.	FILE NAME:
C	ECN-0703109(Sally) (7,D)(9,D)	03/15/07				A4	D	DMM101A50AE12C (5&E8)(EMPS)
B	ECN-0703051(Sally) (7,C)(7,D)	02/28/07						
A	ECN-0612093(Sally)	12/12/06	D	ECN-0802086(Sally) (3,F)(8,D)	02/18/08			

DRAWN: JOE 02/18/08  
CHECKED: peavl 02/19/08  
APPROVED: Joe 02/19/08

DRAWN NAME: FLAT CABLE  
602A-10P/602A-10P  
PRODUCT NO. DMM101A50AE12C

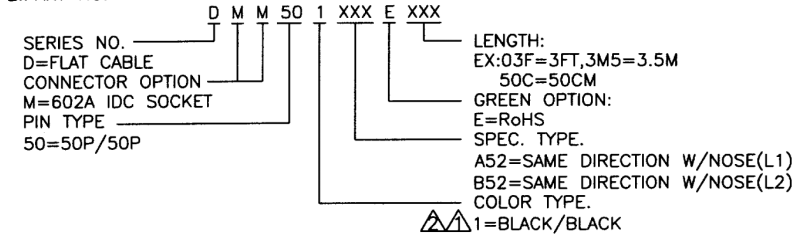




NOTES  
1.PART DESCRIPTION:

ITEM	DESCRIPTION
1	FLAT CABLE, CABLING: UL2651 28AWG 50 CONDUCTOR, PITCH=1.00mm COLOR: GRAY,100% OPEN SHORT TEST
2	IDC SOCKET 50 PINS W/NOSE W/O S.R. PITCH=2.0mm INSULATOR: BLACK
3	IDC SOCKET 50 PINS W/O NOSE W/O S.R. PITCH=2.0mm INSULATOR: BLACK

2.PART NO.



PART NO.	L ( ) ±	APPROVED

LENGTH TOTAL TOLERANCE:  
 100 ≥ L ±3  
 500 ≥ L > 100 ±10  
 500 < L < 1000 ±20  
 L > 1000 ±30



UNLESS OTHERWISE SPECIFIED TOLERANCE		MC-COMPONENTS	
ANG.	±5°	DRAWN NAME: FLAT CABLE 602A-50P/602A-50P 1/2 PRODUCT NO. DMM501XXXEXXX FILE NAME: DMM501A52E(E8)	
0.	±0.5		
.0	±0.3		
.00	±0.2		
SCALE:	AS SHOWN	UNIT:	mm
DRAWN	JOE	DATE	07/21/08
CHECKED	pearl	DATE	07/22/08
APPROVED	Joe	DATE	07/22/08
SIZE	A4	REV.	D

REV.	DESCRIPTION	DATE
D	ECN-0807199(Luke)SEE DWG 1/2	07/21/08
C	ECN-0806199(Luke) (1,C)(3,A)	06/24/08
B	ECN-0806166(Rita) (1,C)(3,A)	06/23/08



