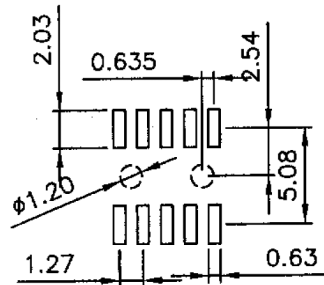
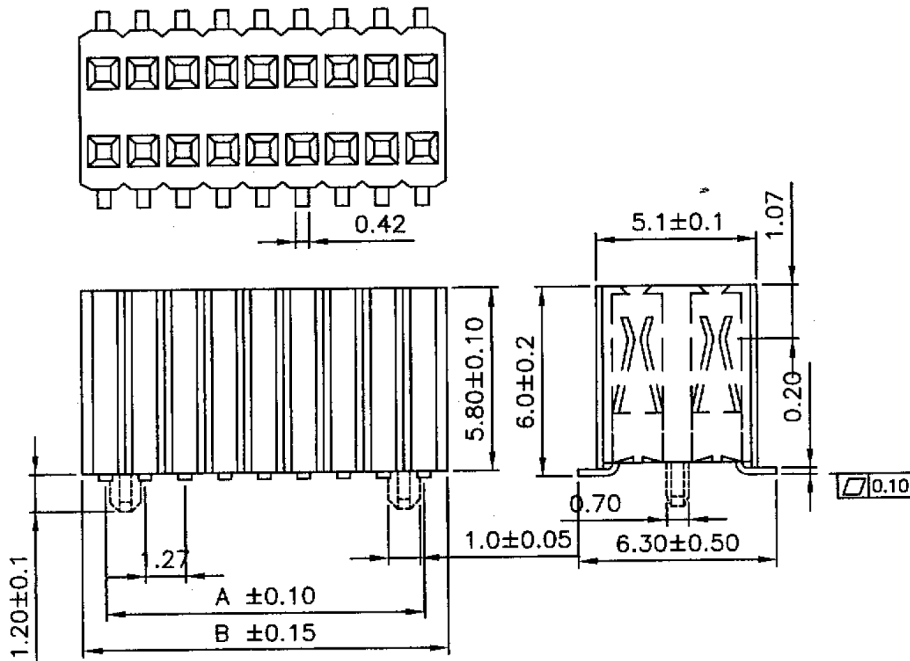
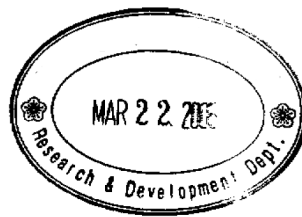


No. of Contacts	DIMENSIONS	
	A	B
6	2.54	4.01
8	3.81	5.28
10	5.08	6.55
12	6.35	7.82
14	7.62	9.09
16	8.89	10.36
18	10.16	11.63
20	11.43	12.90
22	12.70	14.17
24	13.97	15.44
26	15.24	16.71
28	16.51	17.98
30	17.78	19.25
32	19.05	20.52
34	20.32	21.79
36	21.59	23.06
38	22.86	24.33
40	24.13	25.60
42	25.40	26.87
44	26.67	28.14
46	27.94	29.41
48	29.21	30.68
50	30.48	31.95
52	31.75	33.22
54	33.02	34.49
56	34.29	35.76
58	35.56	37.03
60	36.83	38.30
62	38.10	39.57
64	39.37	40.84
66	40.64	42.11
68	41.91	43.38
70	43.18	44.65
72	44.45	45.92
74	45.72	47.19
76	46.99	48.46
78	48.26	49.73
80	49.53	51.00
82	50.80	52.27
84	52.07	53.54
86	53.34	54.81
88	54.61	56.08
90	55.88	57.35
92	57.15	58.62
94	58.42	59.89
96	59.69	61.16
98	60.96	62.43
100	62.23	63.70



Recommended P.C.Board SMD Layout



SPECIFICATION

MATERIAL

Insulator: PA6T, Rated UL94V-0

Choose LCP

Contacts: Phosphor Bronze

CONTACT PLATING

Underplate: 50µ" Nickel

Contact Area: 1µ"~30µ" Selective Gold

△ Solder Tails Area: 100µ" Tin/Lead or 100µ" Tin/Lead Free ELECTRICAL

Current Rating: 1 Amps Max.

Contact Resistance: 20 mohms Max.

Insulation Resistance: 5000 Mohms Min @ 500 VDC

Dielectric Withstanding Voltage: 500 VAC / Minute

Operating Temperature: -55°C To +105°C

PART NO.

711 D X XXX X X X A A 3
1 2 3 4 5 6 7 8 9 10

1.SERIES NO.

2.TYPE:

D=SMT

△ 3.ENVIRONMENT PROTECTION MATERIAL:

-=General

E=Rohs

4.CONTACT NUMBER:

See Contacts

5.CONTACT PLATING:

△ T= Tin Plated

G=Gold Flash

S=Selective Gold

A=5µ" Gold (Selective)

B=10µ" Gold (Selective)

C=15µ" Gold (Selective)

2=20µ" Gold (Selective)

D=30µ" Gold (Selective)

H=1µ" Gold Flash 30µ" on Contact Area

6.ROW TYPE:

B=Dual Row(6T)

C=Dual Row(LCP)

△ 7.PROCESS OPTION:

0=With Positioning Post

1=Without Positioning Post

8.INSULATOR HEIGHT

A=5.8mm

9.CONTACT INSULATOR OPTION:

A=Fully Loaded

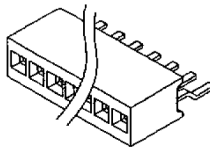
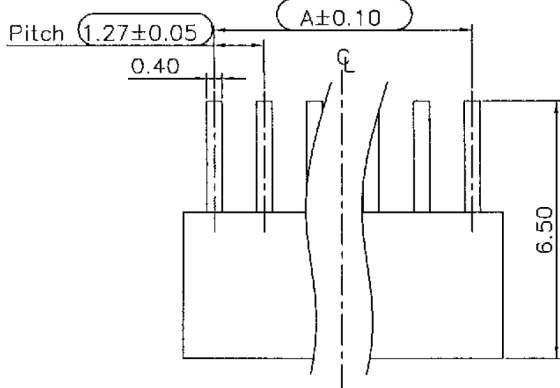
10.INSULATOR COLOR:

3=Black

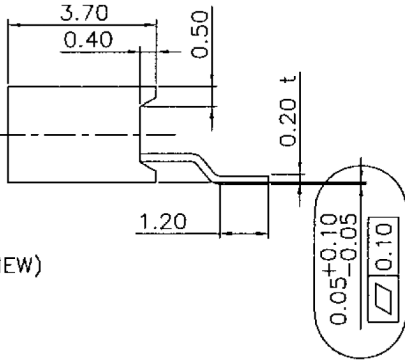
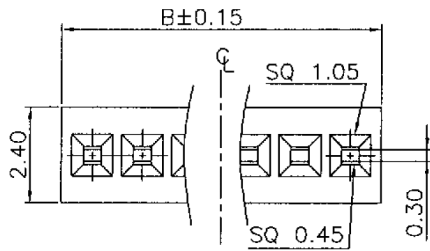


UNLESS OTHERWISE SPECIFIED TOLERANCE		MC-COMPONENTS
ANG.	±5°	
0.	±0.5	
.0	±0.3	
SCALE: AS SHOWN	UNIT: mm	
03/14/05	DRAWN JOE	03/16/05
06/21/01	CHECKED <i>Deav</i>	03/21/05
11/06/00	APPROVED <i>Sosa</i>	03/11/05
DATE	SIZE A4	REV. C
DRAWN NAME: FEMALE HEADER		PRODUCT NO. 711DXXXXXXAA3
DUAL ROW		FILE NAME: 711DEXXXXB0AA3(P1)

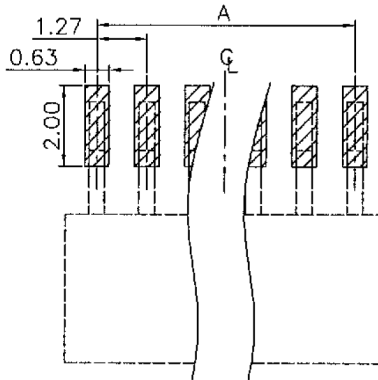
C	ECN-0503096(Emily)△(7,F)(7,E)(7,C)	03/14/05	DRAWN	JOE	03/16/05	DRAWN NAME:	FEMALE HEADER
B	ECN-0106083(joe)△	06/21/01	CHECKED	<i>Deav</i>	03/21/05	DUAL ROW	
A	ECN-0011028	11/06/00	APPROVED	<i>Sosa</i>	03/11/05	PRODUCT NO.	711DXXXXXXAA3
REV.	DESCRIPTION	DESCRIPTION	DATE	SIZE	REV.	FILE NAME:	711DEXXXXB0AA3(P1)



SCALE (2:1)



RECOMMENDED P.C.B LAYOUT(TOP VIEW)
TOLERANCES: ±0.05mm



Dimensional Information

CHANT SINCERE P/NO.	Dim.A	Dim.B
XXXX-006XXXXXX (NOT RELEASE)	6.35	8.09
711DE0082GOCA3	8.89	10.63
XXXX-010XXXXXX (NOT RELEASE)	11.43	13.17
711DE0122GOCA3	13.97	15.71
XXXX-020XXXXXX (NOT RELEASE)	24.13	25.87
XXXX-024XXXXXX (NOT RELEASE)	29.21	30.95
XXXX-030XXXXXX (NOT RELEASE)	17.78	19.52
XXXX-040XXXXXX (NOT RELEASE)	49.53	51.27

SPECIFICATION

MATERIAL

Insulator: Thermal Plastic UL94V-0

Contacts: Copper Alloy

CONTACT PLATING

Underplate: 80u" Nickel

Contact Area: 1u"~30u" Selective Gold

Solder Tails Area: 100u" Tin/Lead Free (Brighten Tin/Matte Tin)

ELECTRICAL

Operation Voltage: 250 VAC Max.

Current Rating: 1 Amp Max.

Contact Resistance: 15 mohms Max.

Insulator Resistance: 500 Mohms Min.

Dielectric Voltage: 500 VAC/ 1 Minute

Temperature Range: -55C TO 105C

MECHANICAL

INSERTION FORCE:50g/Pin

Part no.



711 D X XXX X G O C A 3
1 2 3 4 5 6 7 8 9 10

1.SERIES NO.

2.TYPE:

D=SMT TYPE

3.ENVIRONMENT PROTECTION

MATERIAL:

J=SONY SS-00259(Reserved)

K=SONY SS-00259(Matte Tin)

(Reserved)

E=RoHS

F=RoHS (Matte Tin)

4.CONTACT NUMBER:

008=8 PIN

5.CONTACT PLATING:

S=Gold Flash (Selective)

R=3u" Gold (Selective)

A=5u" Gold (Selective)

B=10u" Gold (Selective)

C=15u" Gold (Selective)

D=30u" Gold (Selective)

2=20u" Gold (Selective)



UNLESS OTHERWISE SPECIFIED TOLERANCE	
ANG.	±5
11~	±0.35
6~10	±0.25
0~5	±0.20

MC-COMPONENTS

SCALE: AS SHOWN UNIT: mm

DRAWN CHERRY 06/30/06

CHECKED Brian 07/04/06

APPROVED Mark 07/04/06

DRAWN NAME: 1.27mm Pitch FEMALE HEADER

PRODUCT NO. 711DXXXX2GOCA3

FILE NAME: 711DKXXX2GOCA3(GA)

REV.	DESCRIPTION	DATE
A	ECN-0607004(Churchill)	06/22/06