

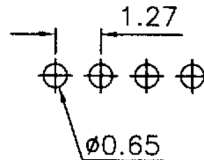
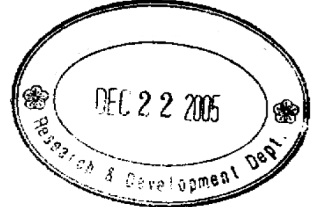
**Specifications**  
 Current Rating: 1Amp  
 Insulation Resistance: 1000MΩ Min.  
 Dielectric Withstanding: 300V AC  
 Contact Resistance: 20mΩ Max.  
 Operating Temperature: -40°C to +105°C

**Materials**  
 Contact Material: Phosphor Bronze  
 Insulation Material: Polyester, UL94V-0  
 PA6T

All materials must be GP materials

Part no. 711 A X XXX X A S B A 3  
 1 2 3 4 5 6 7 8 9 10

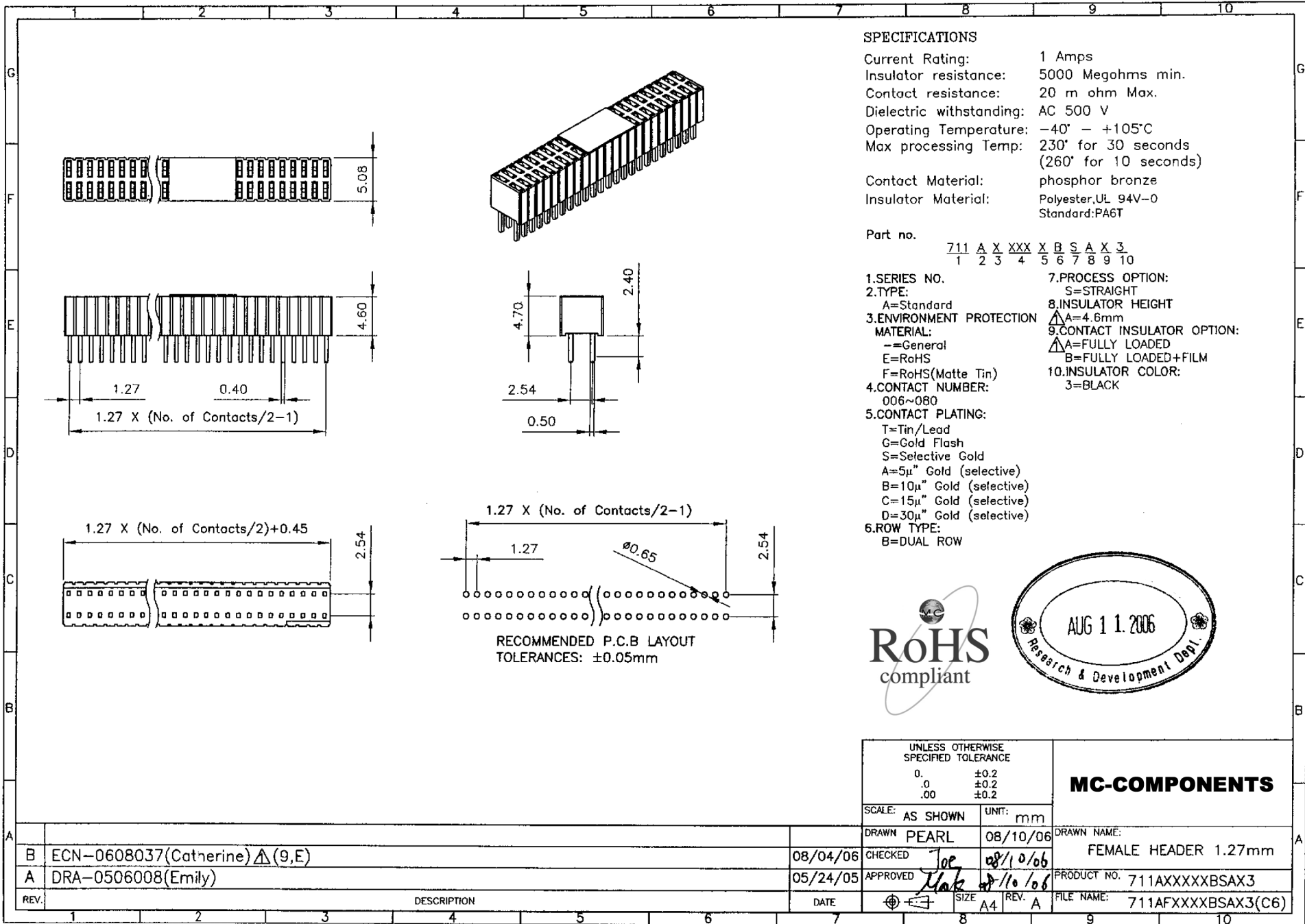
- 1. SERIES NO.
- 2. TYPE:  
A=Standard
- 3. ENVIRONMENT PROTECTION MATERIAL:  
--=General  
E=RoHS
- 4. CONTACT NUMBER:  
002~035
- 5. CONTACT PLATING:  
T=Tin Plated  
G=Gold Flash
- 6. ROW TYPE:  
A=Single Row
- 7. PROCESS OPTION:  
S=Straight
- 8. INSULATOR HEIGHT  
B=8.5mm
- 9. CONTACT INSULATOR OPTION:  
A=Fully Loaded
- 10. INSULATOR COLOR:  
3=Black



RECOMMENDED P.C.B BOARD  
 TOLERANCES: ±0.05mm

UNLESS OTHERWISE SPECIFIED TOLERANCE		<b>MC-COMPONENTS</b>
ANG.	±5°	
.0	±0.38	SCALE: AS SHOWN UNIT: mm
.00	±0.25	
.000	±0.13	
DRAWN	JOE	12/20/05
CHECKED	peay	12/20/05
APPROVED	Mark	12/20/05
DATE	12/19/05	PRODUCT NO. 711AXXXXASBA3
REV.	A	FILE NAME: 711AEXXXXASBA3(Q3)

REV.	A	DESCRIPTION	DATE
		DRA-0512047(Julia)	12/19/05



**SPECIFICATIONS**

Current Rating: 1 Amps  
 Insulator resistance: 5000 Megohms min.  
 Contact resistance: 20 m ohm Max.  
 Dielectric withstanding: AC 500 V  
 Operating Temperature: -40° - +105°C  
 Max processing Temp: 230° for 30 seconds  
 (260° for 10 seconds)  
 Contact Material: phosphor bronze  
 Insulator Material: Polyester,UL 94V-0  
 Standard:PA6T

Part no. 711 A X XXX X B S A X 3  
 1 2 3 4 5 6 7 8 9 10

- 1.SERIES NO.
- 2.TYPE:  
A=Standard
- 3.ENVIRONMENT PROTECTION MATERIAL:  
-=General  
E=RoHS  
F=RoHS(Matte Tin)
- 4.CONTACT NUMBER:  
006~080
- 5.CONTACT PLATING:  
T=Tin/Lead  
G=Gold Flash  
S=Selective Gold  
A=5μ" Gold (selective)  
B=10μ" Gold (selective)  
C=15μ" Gold (selective)  
D=30μ" Gold (selective)
- 6.ROW TYPE:  
B=DUAL ROW
- 7.PROCESS OPTION:  
S=STRAIGHT
- 8.INSULATOR HEIGHT  
A=4.6mm
- 9.CONTACT INSULATOR OPTION:  
A=FULLY LOADED  
B=FULLY LOADED+FILM
- 10.INSULATOR COLOR:  
3=BLACK



RECOMMENDED P.C.B LAYOUT  
 TOLERANCES: ±0.05mm

UNLESS OTHERWISE SPECIFIED TOLERANCE	
0.	±0.2
.0	±0.2
.00	±0.2

**MC-COMPONENTS**

SCALE: AS SHOWN	UNIT: mm
DRAWN PEARL	08/10/06
CHECKED Joe	08/10/06
APPROVED Mark	08/10/06
DATE	SIZE A4

DRAWN NAME: FEMALE HEADER 1.27mm  
 PRODUCT NO. 711AXXXXBSAX3  
 FILE NAME: 711AFXXXXBSAX3(C6)

REV.	DESCRIPTION	DATE
B	ECN-0608037(Catherine) Δ(9,E)	08/04/06
A	DRA-0506008(Emily)	05/24/05