



**SPECIFICATION**

**MATERIAL**

Insulator: Tmermal Plastic UL94V-0

Contacts: Copper Alloy

**CONTACT PLATING**

Underplate: 50u"~100u" Nickel

Contact area: 1u"~30u" Selective gold

Solder tails area: 100u"~200u" Tin/Lead(Brighten Tin) or  
100u"~200u" Tin/Lead Free(Brighten Tin/Matte Tin)

**ELECTRICAL**

Operation voltage: 300 VDC Max.

Current rating: 1.0 Amps Max.

Contact resistance: 20 mohms Max.

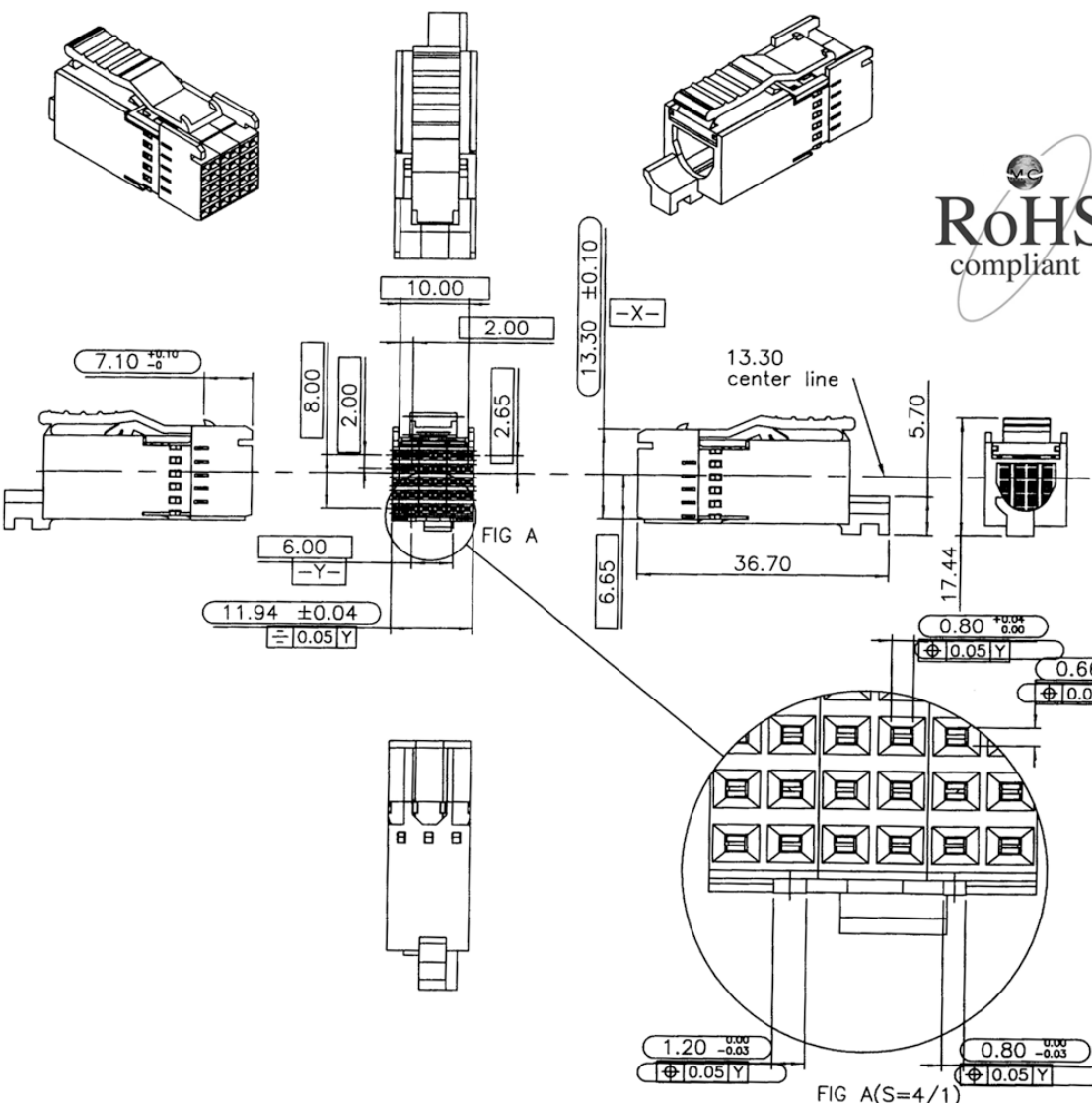
Insulation resistance: 1000 Mohms min @ 500 VDC

Dielectric withstanding voltage: 1000 VAC / minute

Temperature range: -55°C TO +125°C

Part no.

609 GX2 X 30 F D S 0 X  
1 2 3 4 5 6 7 8 9



**1.SERIES NO.**

609=2.0mm (Future Bus)

**2.Type:**

G02=Future Bus cable CONN. (26Awg)

GA2=Future Bus cable CONN. (24Awg)

**3.Environment Protection:**

**MATERIAL:**

-=General

J=Sony SS-00259(Reserved)

K=Sony SS-00259(Matte Tin) (Reserved)

E=RoHS

F=RoHS (Matte Tin)

**4.CONTACT Number:**

30 Pin

**5.Connector type:**

F=Female

**6.Contact area plating:**

D=30u" Gold(Selective)

**7.Process option:**

S=Strait 180°

**8.Process option:**

0=Round Hole(Cable Tie)

**9.INSULATOR COLOR:**

1=white(connector)

4=gray(connector)



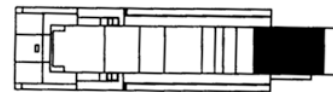
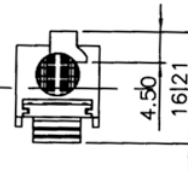
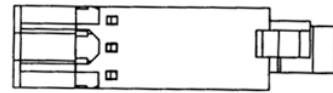
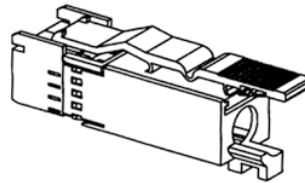
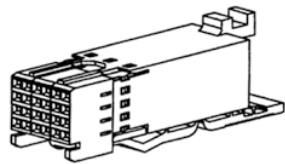
UNLESS OTHERWISE SPECIFIED TOLERANCE	
ANG.	±5°
0.	±0.5
.0	±0.3
.00	±0.2

**MC-COMPONENTS**

REV.	DESCRIPTION	DATE
E	ECN-0701128(Andy)△(7,E)(9,D)	01/22/07
D	ECN-0612196(Andy)CHANGE OUTLINE	12/26/06
C	ECN-0610086(Andy)CHANGE OUTLINE	10/11/06

SCALE:	AS SHOWN	UNIT:	mm
DRAWN	CHERRY	01/22/07	
CHECKED	Andy	01/22/07	
APPROVED	Mark	01/22/07	

DRAWN NAME:	Future bus cable CONN.(5X6)
PRODUCT NO.	609GX2X30FDS0X
FILE NAME:	609G02K30FDS0X



**SPECIFICATION**

**MATERIAL**

Insulator: Thermal Plastic UL94V-0

Contacts: Copper Alloy

**CONTACT PLATING**

Underplate: 50u"~100u" Nickel

Contact area: 1u"~30u" Selective gold

Solder tails area: 100u"~200u" Tin/Lead(Brighten Tin)or  
100u"~200u" Tin/Lead Free(Brighten Tin/Matte Tin)

**ELECTRICAL**

Operation voltage: 300 VDC Max.

Current rating: 1.0 Amps Max.

Contact resistance: 20 mohms Max.

Insulation resistance: 1000 Mohms min @ 500 VDC

Dielectric withstanding voltage: 1000 VAC / minute

Temperature range: -55°C TO +125°C

Part no.

609 GX1 X 24 F D S X X  
1 2 3 4 5 6 7 8 9

1.SERIES NO.

609=2.0mm (Future Bus)

△ 2.Type:

G01=Future Bus cable CONN.  
(26Awg)

GA1=Future Bus cable CONN.  
(24Awg)

3.Environment Protection:

MATERIAL:

--General

J=SONY SS-00259(Reserved)

K=SONY SS-00259(Matte Tin)  
(Reserved)

E=RoHS

F=RoHS(Matte Tin)

4.CONTACT Number:

24 Pin

5.Connector type:

F=Female

6.Contact area plating:

D=30u" Gold(Selective)

7.Process option:

S=Straight 180

△ 8.Process option:

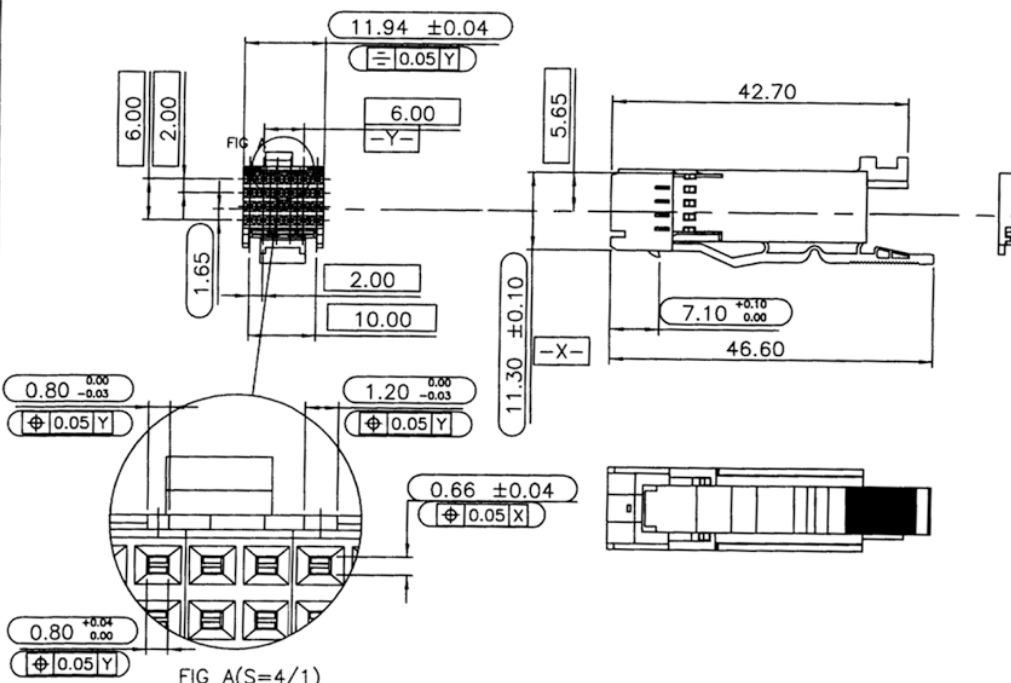
0=Round Hole(Cable Tie)  
(609G01)

1=Square Hole(Cable Tie)  
(609GA1)

9.INSULATOR COLOR:

1=white(connector)

4=gray(connector)



UNLESS OTHERWISE SPECIFIED TOLERANCE	
ANG.	±5°
0.	±0.5
.0	±0.3
.00	±0.2

**MC-COMPONENTS**

SCALE: AS SHOWN UNIT: mm

DRAWN CHERRY 01/22/07

DRAWN NAME: Future bus cable CONN.(4X6)

CHECKED Andy 01/22/07

PRODUCT NO. 609GX1X24FDSXX

APPROVED Mark 01/23/07

FILE NAME: 609G01K24FDS0X

REV.	DESCRIPTION	DATE
I	ECN-0701128(Andy)△(7,E)(9,D)	01/22/07
H	ECN-0610085(Andy)CHANGE OUTLINE	10/11/06