



| POSITION | A | B | C |
|----------|-------|-------|------|
| 9M | 16.92 | 25.00 | 30.8 |
| 15M | 25.25 | 33.30 | 39.2 |
| 25M | 38.96 | 47.10 | 53.1 |
| 37M | 55.42 | 63.50 | 69.4 |

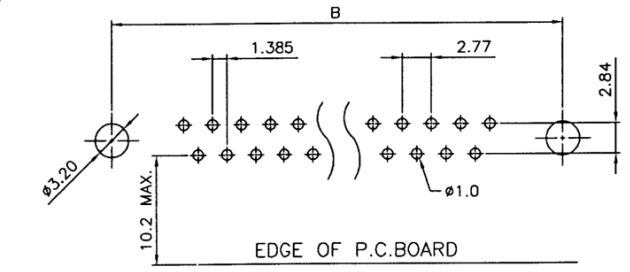
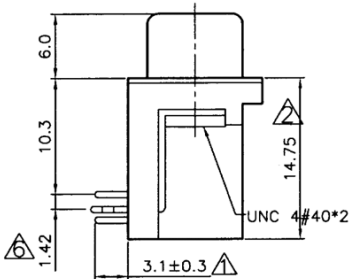
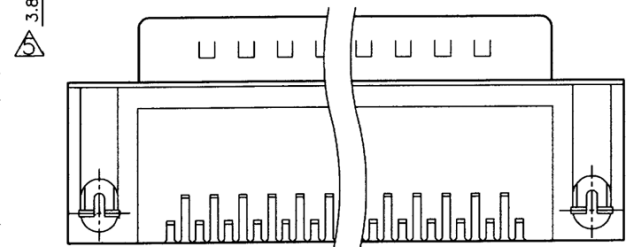
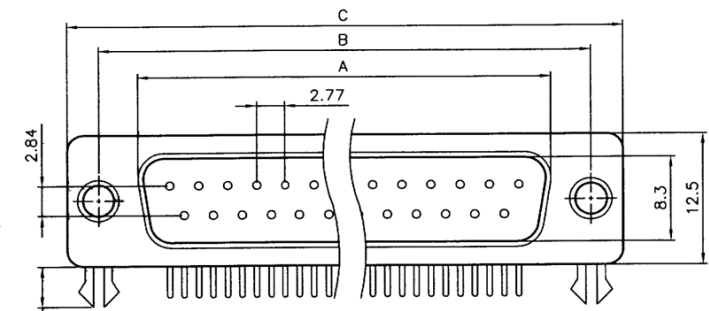
SPECIFICATION

MATERIAL
 Insulator: Thermal Plastic UL94V-0
 Contacts: Copper Alloy
 Shell: Steel
 Rivet, Boardlock: Copper Alloy
CONTACT PLATING
 Underplate: 50u"~100u" Nickel
 Contact Area: 1u"~30u" Selective Gold
 Solder Tails Area: 100u"~200u" Tin/Lead(Brighten Tin) or
 100u"~200u" Tin/Lead Free(Brighten Tin/Matte Tin)

ELECTRICAL
 Operation Voltage: 250 VAC Max.
 Current Rating: 3 Amps
 Contact Resistance: 15 mohms
 Insulation Resistance: 3000 Mohms Min @ 500 VDC
 Dielectric Withstanding Voltage: 1000 VAC / Minute
 Temperature Range: -55°C TO +105°C
 Part no.

| | 206 | A | X | XX | M | X | X | B | B | X | 3 |
|--|-----|---|---|----|---|---|---|---|---|----|----|
| | 1 | 2 | 3 | 4 | 5 | 6 | 7 | 8 | 9 | 10 | 11 |

- 1. SERIES NO.
- 2. TYPE: A=Standard
- 3. ENVIRONMENT PROTECTION
 MATERIAL:
 --General
 J=SONY SS-00259(Reserved)
 K=SONY SS-00259(Matte Tin)
 (Reserved)
 E=RoHS
 F=RoHS(Matte Tin)
- 4. CONTACT NUMBER:
 09 15 25 37
- 5. CONTACT TYPE:
 M=Male
 P=Male
 (Phosphor Bronze)
- 6. CONTACT PLATING:
 G=Gold Flash
- 7. SHELL PLATING:
 P=Tin Plated+Dimple
 Q=Nickel Plated+Dimple
- 8. PROCESS OPTION:
 B=Rivet W/Boardlock
- 9. PARTS OPTION:
 B=4#40 Thread Rivet
- 10. PARTS DIMENSION
 A=Non Accessories
 B=Loose Hex-Screws(4.8*11.8)
 D=Loose Hex-Screws(5.8*12)
 F=Loose Hex-Screws(4.8*11.8)
 M3 Inner Thread
 W=Loose Hex-Screws(4.8*11.8)
 M2.6 Inner Thread
 Y=Loose Hex-Screws(5.8*12)
 M2.6 Inner Thread
- 11. INSULATOR:
 3=Black



RECOMMENDED P.C.B LAYOUT (TOP VIEW)
 TOLERANCES: ±0.05mm

PARTS DIMENSION TABLE

| parts no. | DIM. a | DIM. b | inner thread |
|-----------|--------|--------|--------------|
| B | 4.8 | 11.8 | 4#40 |
| D | 5.8 | 12.0 | 4#40 |
| F | 4.8 | 11.8 | M3 |
| W | 4.8 | 11.8 | M2.6 |
| Y | 5.8 | 12.0 | M2.6 |



| UNLESS OTHERWISE SPECIFIED TOLERANCE | |
|--------------------------------------|------|
| ANG. | ±5' |
| 0. | ±0.5 |
| .0 | ±0.3 |
| .00 | ±0.2 |

MC-COMPONENTS

SCALE: AS SHOWN UNIT: mm

DRAWN: PEARL 09/21/07
 CHECKED: Cherry 09/26/07
 APPROVED: Joe 09/26/07
 SIZE: A4 REV: G

DRAWN NAME: D-SUB PCB RIGHT ANGLE
 FOOTPRINT: 9.4mm (0.405")
 PRODUCT NO: 206AXXXMXXBBX3
 FILE NAME: 206AKXXMXXBBA3

| REV. | DESCRIPTION | DATE | REV. | DESCRIPTION | DATE |
|------|--------------------|----------|------|----------------------|----------|
| D | ECN-0409093(Kelly) | 09/16/04 | G | ECN-0709132(Jocelyn) | 09/17/07 |
| C | ECN-0403105(Bonny) | 03/17/04 | F | ECN-0704113(Hwp) | 04/16/07 |
| B | ECN-0110011(Lin) | 10/02/01 | E | ECN-0701035(Sally) | 01/11/07 |



SPECIFICATION MATERIAL

Insulator: Thermal Plastic UL94V-0
 Contacts: Copper Alloy
 Shell: Steel
 Rivet, Boardlock: Copper Alloy
CONTACT PLATING
 Underplate: 50u" Nickel
 Contact Area: 1u"~30u" Selective Gold
 Solder Tails Area: 100u"~200u" Tin/Lead(Brighten Tin) or
 100u"~200u" Tin/Lead Free(Brighten Tin/Matte Tin)

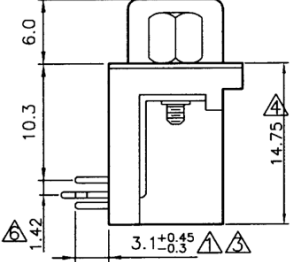
ELECTRICAL
 Operation Voltage: 250 VAC Max.
 Current Rating: 3 Amps
 Contact Resistance: 15 mohms
 Insulation Resistance: 3000 Mohms Min @ 500 VDC
 Dielectric Withstanding Voltage: 1000 VAC / Minute
 Temperature Range: -55°C TO +105°C
 Part no.

206 A X XX X X X A A X X
 1 2 3 4 5 6 7 8 9 1011

- 1.SERIES NO.
- 2.TYPE: A=Standard
- 3.ENVIRONMENT PROTECTION MATERIAL:
 --General
 J=SONY SS-00259(Reserved)
 K=SONY SS-00259(Matte Tin) (Reserved)
 E=RoHS
 F=RoHS(Matte Tin)
- 4.CONTACT NUMBER:
 09 15 25 37
- 5.CONTACT TYPE:
 F=Female
 S=Female
 (Phosphor Bronze)
- 6.CONTACT PLATING:
 G=Gold Flash
 S=1u" Gold (Selective)
 A=5u" Gold (Selective)
 C=15u" Gold (Selective)
 D=30u" Gold (Selective)
 M=2u" Gold Plated
 N=3u" Gold Plated
 W=15u" Gold Plated

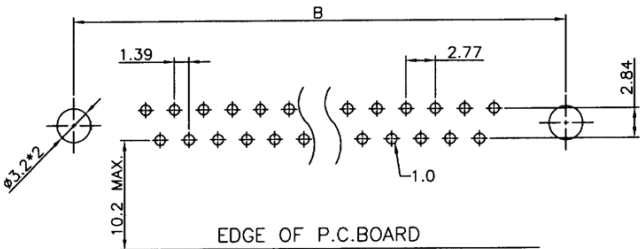
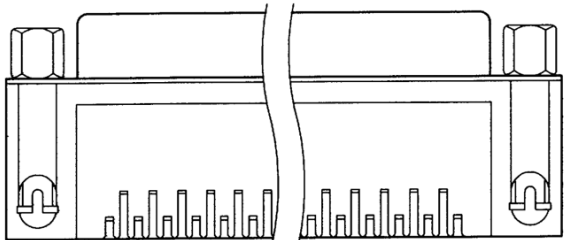
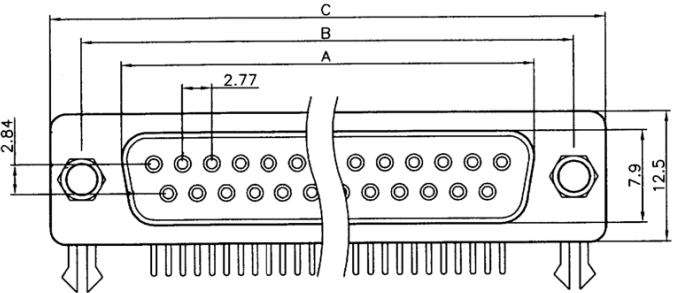
- 7.SHELL PLATING:
 T=Tin Plated
 N=Nickel Plated
 Z=Zinc Plated
- 8.PROCESS OPTION:
 A=Fixed W/Boardlock
- 9.PARTS OPTION:
 A=Non Rivet
- 10.PARTS DIMENSION
 C=Fixed HEX-Screws(4.8*11.8)
 E=Fixed HEX-Screws(5.8*12)
 G=Fixed HEX-Screws(4.8*11.8)
 M3 Inner Thread
 H=Fixed HEX-Screws(6.0*13.2)
 M2.6 Inner Thread
 I=Fixed HEX-Screws(5.8*11.8)
 M3 Inner Thread
 X=Fixed HEX-Screws(4.8*11.8)
 M2.6 Inner Thread
 Z=Fixed HEX-Screws(5.8*12)
 M2.6 Inner Thread
 7=Fixed HEX-Screws(6*12)
 9=Fixed HEX-Screws(6.1*12)
 10=Fixed HEX-Screws(6.0*13.0)
 M3 Inner Thread
- 11.INSULATOR:
 3=Black

| POSITION | A | B | C |
|----------|-------|-------|------|
| 9F | 16.30 | 25.00 | 30.8 |
| 15F | 24.60 | 33.30 | 39.2 |
| 25F | 38.30 | 47.10 | 53.1 |
| 37F | 54.80 | 63.50 | 69.4 |



PARTS DIMENSION TABLE

| parts no. | DIM. a | DIM. b | inner thread |
|-----------|--------|--------|--------------|
| C | 4.8 | 11.8 | 4#40 |
| E | 5.8 | 12.0 | 4#40 |
| G | 4.8 | 11.8 | M3 |
| H | 6.0 | 13.2 | M2.6 |
| I | 5.8 | 11.8 | M3 |
| X | 4.8 | 11.8 | M2.6 |
| Z | 5.8 | 12.0 | M2.6 |
| 7 | 6.0 | 12.0 | 4#40 |
| 9 | 6.1 | 12.0 | 4#40 |
| 10 | 6.0 | 13.0 | M3 |



RECOMMENDED P.C.B LAYOUT (TOP VIEW)
 TOLERANCES: ±0.05mm



| UNLESS OTHERWISE SPECIFIED TOLERANCE | |
|--------------------------------------|------|
| ANG. | ±5° |
| 0. | ±0.5 |
| .0 | ±0.3 |
| .00 | ±0.2 |

MC-COMPONENTS

| | |
|-----------------|----------|
| SCALE: AS SHOWN | UNIT: mm |
| DRAWN: PEARL | 09/21/07 |
| CHECKED: Cherry | 09/26/07 |
| APPROVED: Joe | 09/26/07 |
| SIZE: A4 | REV: G |

DRAWN NAME: D-SUB PCB RIGHT ANGLE
 FOOTPRINT: 9.4mm (0.405")
 PRODUCT NO: 206AXXXXXXAXX
 FILE NAME: 206AKXXFXXAACX

| REV. | DESCRIPTION | DATE | REV. | DESCRIPTION | DATE |
|------|-------------------|----------|------|------------------------------------|----------|
| D | ECN-0307061(Jade) | 07/14/03 | G | ECN-0709132(Jocelyn) (5,D) | 09/17/07 |
| C | ECN-0111096(Lucy) | 11/23/01 | F | ECN-0511018(Vicky) (1,B)(7,E)(7,G) | 11/03/05 |
| B | ECN-0110011(Lin) | 10/02/01 | E | ECN-0403100(Bonny) | 03/17/04 |